

FETAL ARRHYTHMIA DETECTION & ASSESSMENT

Janette Strasburger, MD ~ Professor, Pediatric Cardiology ~ CHW

Gretchen Eckstein RN, BSN ~ fMCG (Fetal Magnetocardiography) Program Coordinator ~ CHW

Sara Creighton, MD ~ Asst. Professor, Pediatric Cardiology ~ CHW FV

Children's Hospital of WI Herma Heart Institute



Disclosures

Janette Strasburger, MD

- Grants
 - NIH RO1HL143487 (PI Strasburger, MCW, CHW, HHI)
 - NIH RO1HL063174 (PI Wakai, UW Med Physics)
 - NIH R21EB025901 (PI Wakai, UW Med Physics)
 - Dr. Scholl Foundation, Chicago, IL
- Industry Partners - Tristan Technologies, Inc. and Shared Medical Technologies Inc.

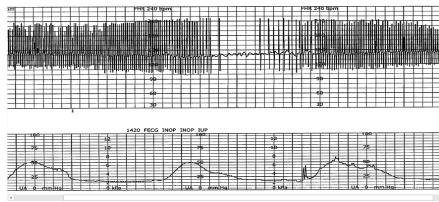
Gretchen Eckstein RN, BSN

- No disclosures

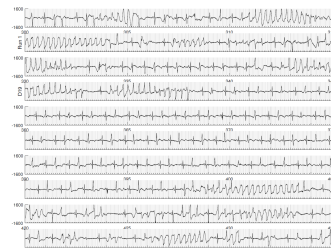
Sara Creighton, MD

- No disclosures

Fetal Monitoring during Labor



fMCG of Torsades (ventricular tachycardia)



Fetal Arrhythmias

**Fetal Hydrops
Cardiomyopathies
Structural Cardiac Defects
At Risk for Genetic Diseases**

**Twin-twin Transfusion
Fetal Growth Restriction
Acute Maternal Illness or Injury
Structural Non-Cardiac Defects
Smoke- or Toxin-exposed Fetuses
Mothers with Systemic Illnesses
Mothers on Drugs/Medications
Presumably Healthy Fetus**

Fetal Magnetocardiography

- Analogous to Electrocardiography (ECG or EKG)
 - Magnetic not electric component
- Safe and non-invasive
 - >870 pregnancies complicated by fetal arrhythmias have been studied in Wisconsin over the past 20 years
- FDA-approved equipment (called SQUID magnetometer)